



Prayoga Institute of Education Research

An update on the Kriya Implementation for Kalyana Karnataka Region 2023-24

Dr. Karuna K Simha
Senior Researcher

Prayoga Institute of Education Research , Bangalore

Main Focus Areas of Kriya Project

- Development of **cognitive abilities** in learners
- **Implementation of experiential learning** among different socio-economic and culturally diverse groups.
- **Utilising culture specific localised resources** for providing learning experiences wherever possible
- Help inculcate **appreciation and belongingness** among the learner's immediate environment
- Helping every learner uses their experiences constructively in his/her own development.
- The project envisions **transformation of regular classrooms to experiential centres**
- **Empowerment of teachers and schools** with requisites like pedagogical skills, material and human resources.

The Project Details

The study focuses on a longitudinal examination of students for their progress, commencing in the 6th grade, spanning a five-year duration.

Year	Year 1	Year 2	Year 3	Year 4	Year 5
Grade 6	✓	✓	✓	✓	✓
Grade 7		✓	✓	✓	✓
Grade 8			✓	✓	✓
Grade 9				✓	✓
Grade 10					✓

Details of the Student Involved in Kriya Across Karnataka

Year	Student Details		
Academic year 2023-24	Number of 6th grade learners	Number of female learners	Number of Male learners
	2415	1175	1240
	Number of 6th grade learners	Number of female learners	Number of Male learners
Academic year 2022-23	459	208	251
	Number of 6th grade learners	Number of female learners	Number of Male learners
	500	221	279

The number of schools engaged throughout Karnataka

Year	Type of Schools Engaged	Number of Schools
Academic year 2023-24	Number of Government Schools	50 schools
	Number of Private Schools	10 schools
Academic year 2022-23	Number of Private Schools	10 schools

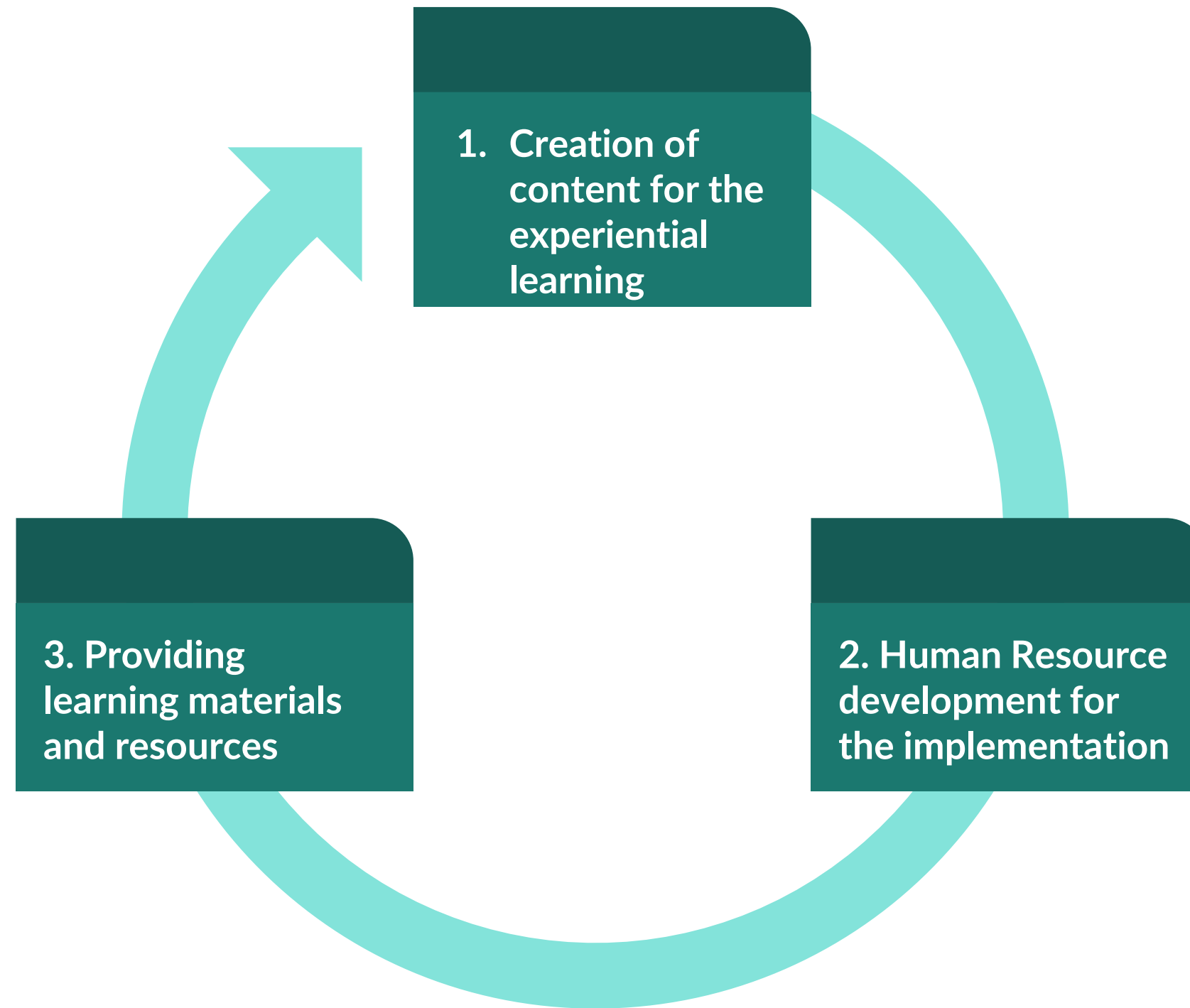
Schools that Kriya has been implemented in Kalyana Karnataka Districts

Sl No	District	School Name
1	Ballary	GHPS BADANAHATTI
2	Bidar	RMSA ADARSHA VIDYALAYA JANWADA
3	Kalburgi	KARNATAKA PUBLIC SCHOOLS GOVT MPS MAHATMA BASAVESHWARA NAGAR
4	Koppal	GHPS HOSALINGAPUR
5	Raichur	GOVT.HIGHER PRIMARY SCHOOL YARAMARS
6	Vijayanagara	GHPS BYASIGIDERI
7	Yadagiri	KARNATAKA PUBLIC SCHOOLS GOVT PU COLLEGE RANGAMPET

Details of students engaged in Kriya Project across Kalyan Karnataka Districts

Sl No	District	School Name	Total No. of Students	No. of Male Students	No. of Female Students
1	Bellary	GHPS BADANAHATTI	68	26	42
2	Bidar	RMSA ADARSHA VIDYALAYA JANWADA	117	78	39
3	Kalburgi	KARNATAKA PUBLIC SCHOOLS GOVT MPS MAHATMA BASAVESHWARA NAGAR	36	18	18
4	Koppal	GHPS HOSALINGAPUR	42	18	24
5	Raichur	GOVT.HIGHER PRIMARY SCHOOL YARAMARS	42	19	23
6	Vijayanagara	GHPS BYASIGIDERI	40		
7	Yadagiri	KARNATAKA PUBLIC SCHOOLS GOVT PU COLLEGE RANGAMPET	81	46	35

Requisites for Implementation of Kriya



Requisites for Implementation of Kriya

1. Creation of content for the experiential learning



- a. Keeping this in view the content as prescribed by the DSERT is devised to cater to the experiential learning pedagogy.
- b. The curriculum runs hand-in-hand with the state curriculum for each year. The content that needs to be covered within one year is kept in view and the order of the content is altered to make the learning more meaningful.

Pedagogical Alignment in the modules

- a. The kriya modules are developed based on the IBL stages for the implementation of experiential learning. In each phase of Kriya, a module is provided for the learner and a corresponding instructional manual for the facilitator is provided.

Instructional Manual for Facilitators	Student Workbook
3 sets per year	3 sets per year
15 sets in 5 years	15 sets in 5 years

Learning Experiences Specific to the context

The content of Kriya makes provision for the use of local specific resources in the learning of science wherever possible. The teachers are provided the liberty of using appropriate exemplars based on the geography and the culture of the school.

2. Human Resource development for the implementation

a. Teacher empowerment

- thoughtfully designed to equip educators for the successful implementation of experiential learning in classrooms.
- categorised as in-service professional development, follow a backward design model with specific yearly objectives as per the requirements at the ground.
- program spans five years and comprises fifteen in-person workshops.
- complemented by online interactive sessions with pedagogy and science experts, recorded videos, specialised online course materials, and knowledge cards tailored to meet specific requirements and objectives.

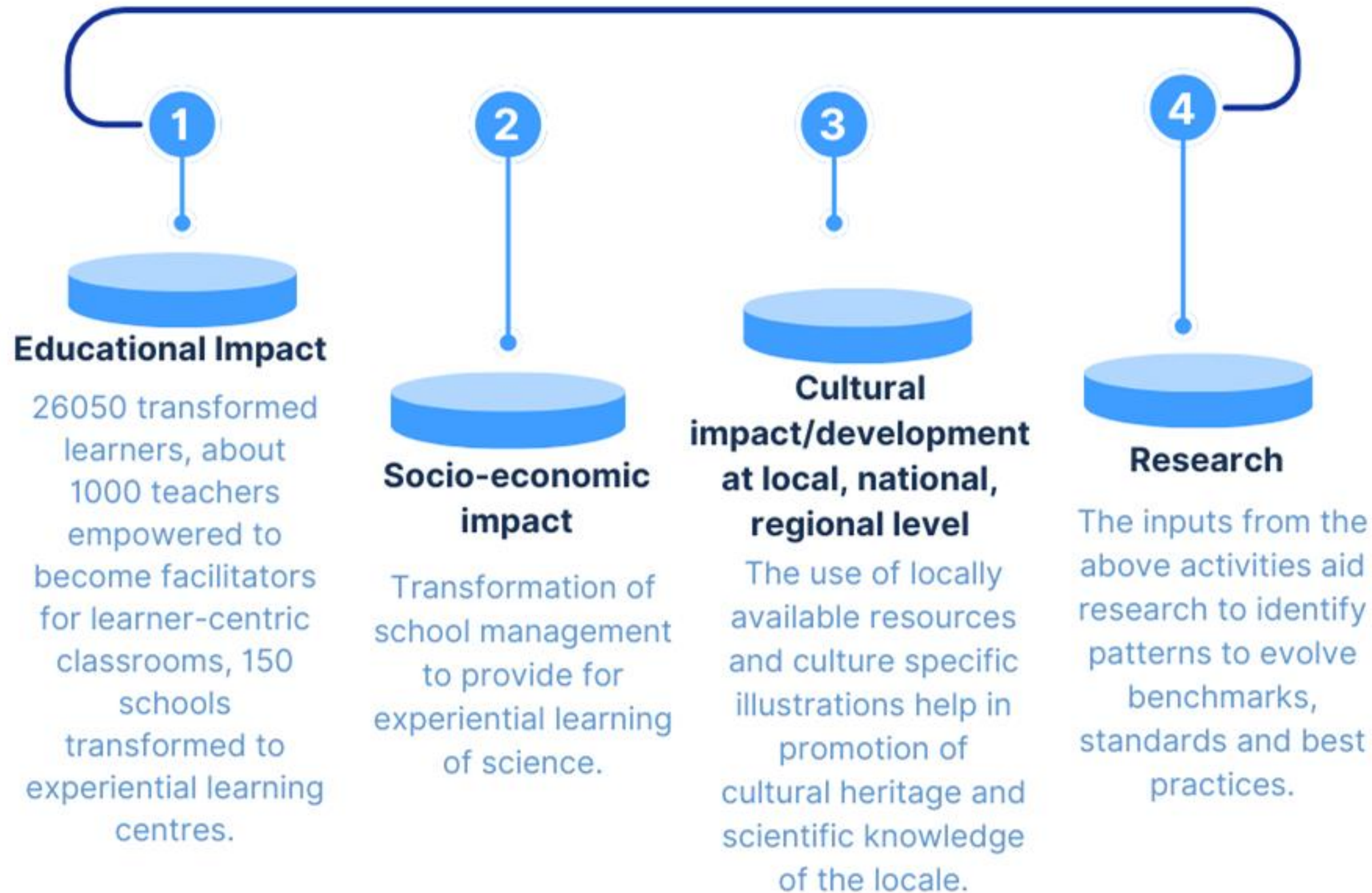
a. Professional development of academic coordinators

The academic coordinators are provided training in skills like mentoring, observation skills and pedagogy to help them with their assigned work. They are also involved in the professional development programs to specialise in the areas of their interest related to the Kriya.

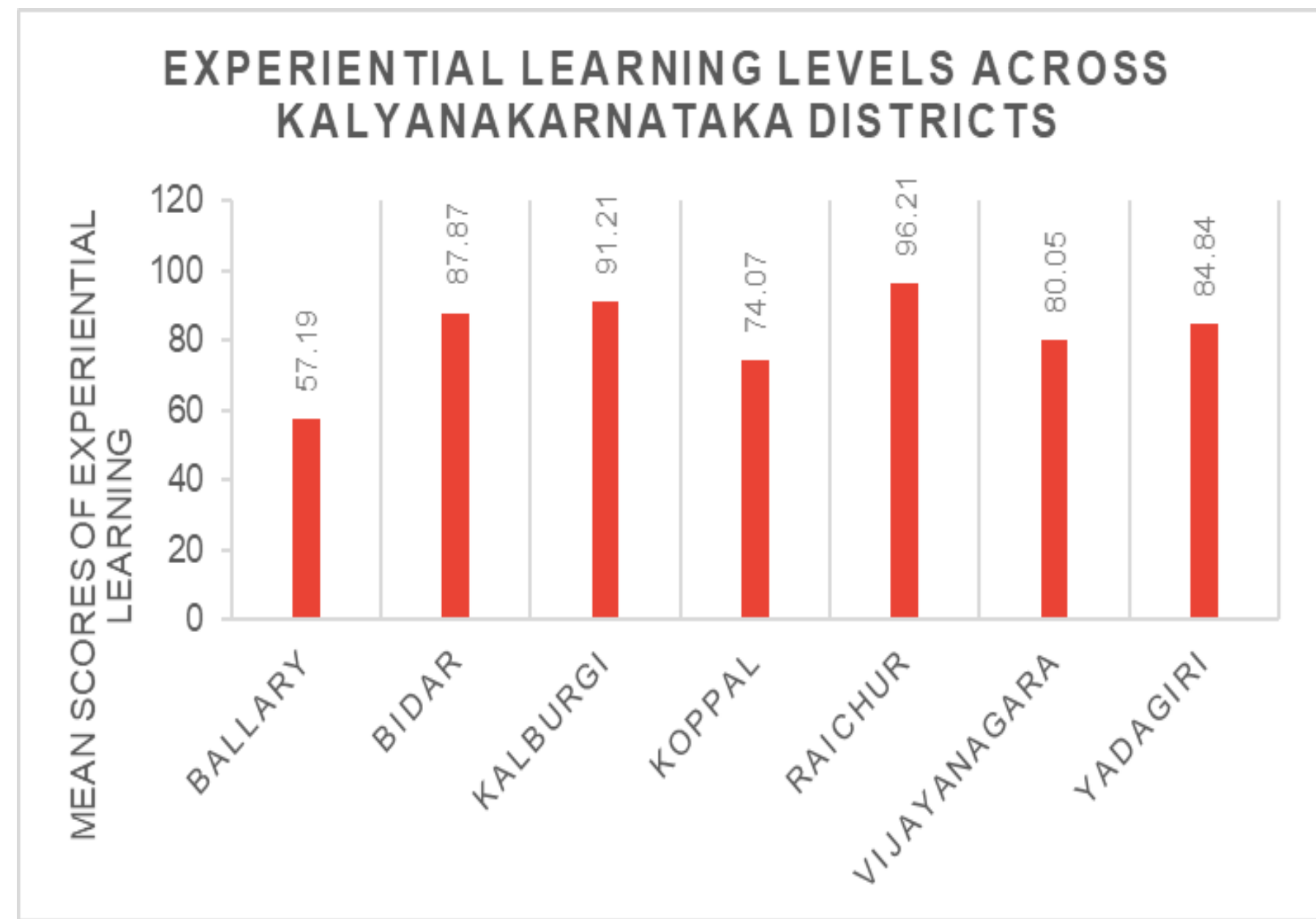
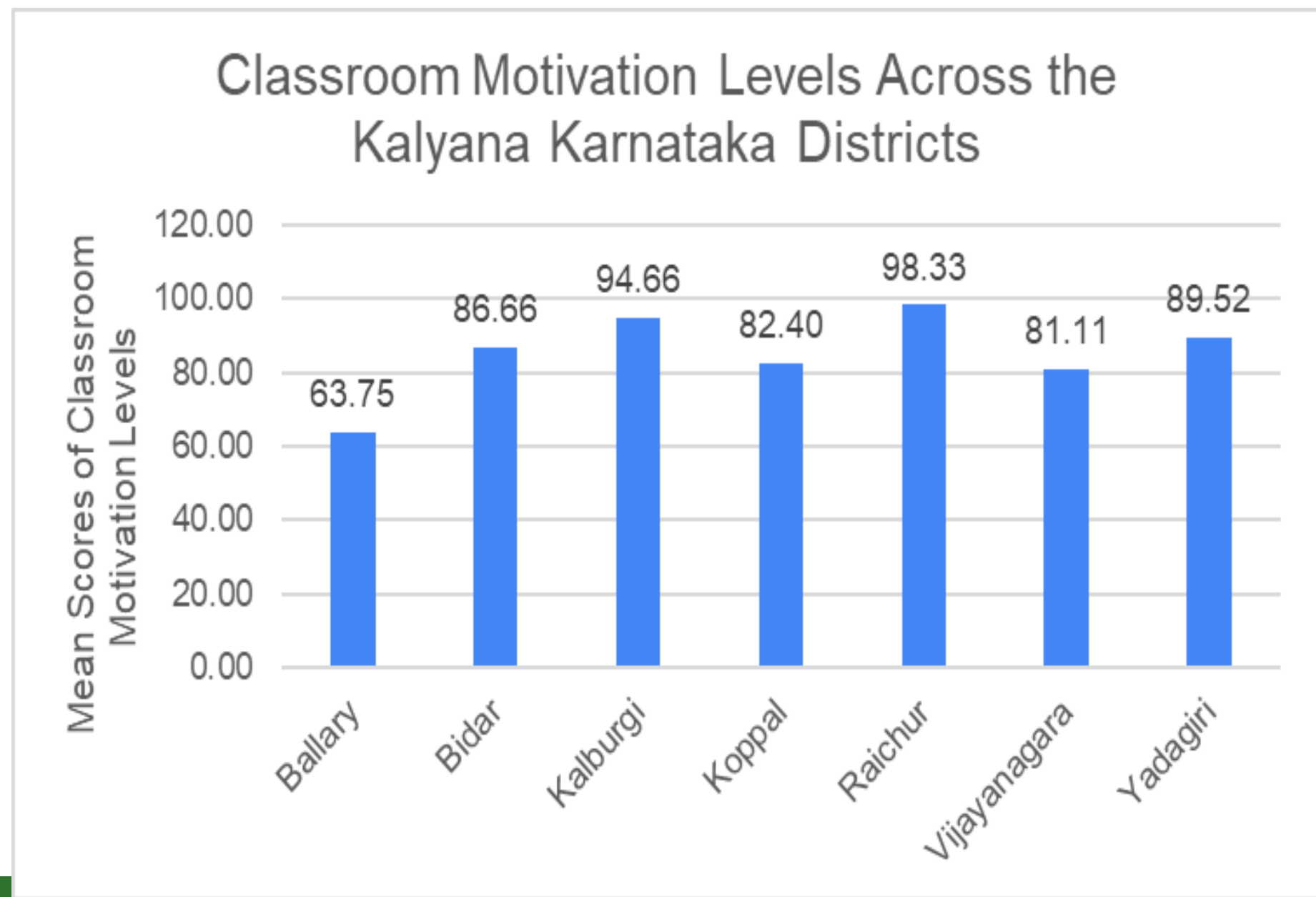
3. Providing learning materials and resources



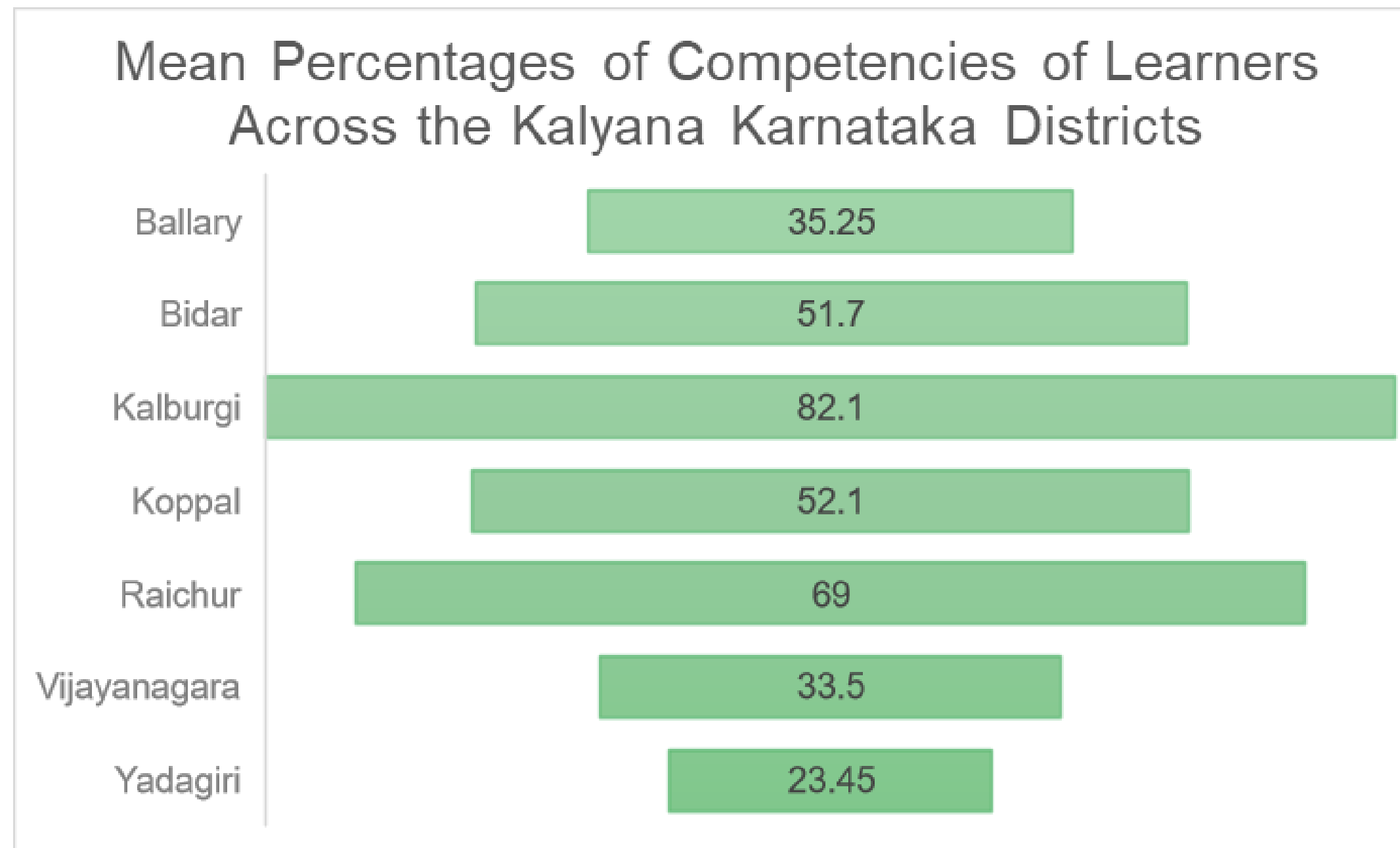
4. Expected Outcomes of the Five-Year Project



V. Current Statistics related to Kriya



Learner Competencies Across Kalyana Karnataka Districts



Thank you